

## Weekly Perimeter Air Monitoring Summary

<b>Client:</b>	<b>Massachusetts Department of Conservation and Recreation</b>
<b>Location:</b>	<b>Pittsfield, Massachusetts</b>
<b>Period:</b>	<b>12/8/25 – 12/14/25</b>

On behalf of the Massachusetts Department of Conservation and Recreation (MassDCR), AECOM Technical Services, Inc. (AECOM) has prepared this data summary for the Bel Air Dam remediation site (the "Site"). This data summary includes both tabular information and written discussions summarizing the ambient air-quality data collected during the indicated reporting period at the Site. The data was collected during the reporting period at the Site in accordance with the Perimeter Air Monitoring Plan (PAMP) prepared by AECOM (2025). Remedial activities are planned for a 5-day work week, Monday through Friday.

### Scope

Air monitoring and sampling activities were conducted during the report period to evaluate conditions at the property line (fenceline) to document ambient air quality conditions at the fenceline and ensure that the measures used to control potential fugitive emissions are effective. The monitoring program consists of the following real-time monitoring and constituent-specific sampling:

- Real-time continuous monitoring for total volatile organic compounds (TVOCs) and particulate matter 10 microns or less (PM<sub>10</sub>) performed at four (4) air monitoring stations (AMS) in the sediment removal area and one (1) AMS in the sediment processing area during work hours.
- Routine instantaneous hand-held monitoring for TVOCs, PM<sub>10</sub>, and mercury vapor, as well as observational monitoring for odor and visible dust conducted routinely during periods of construction activities.
- Chemical-specific sampling for naphthalene using Summa™ canisters and analyzed in accordance with EPA TO-15. Samples are collected at each AMS for 24-hour periods once per week during sediment removal in the northern portion of the river.
- Continuous meteorological monitoring for wind speed, wind direction, sigma (wind variability, calculated), temperature and relative humidity at an onsite location 24 hours per day, 7 days per week.

The real-time continuous and hand-held monitoring results are compared to a list of Site-specific Alert and Action Levels, and the mercury vapor and chemical-specific sampling results are compared to Acceptable Air Concentrations (AACs) developed for the Site. The Action Levels and AACs are defined in the following tables:

- **Table 1:** Site-Specific Alert and Action Levels; and
- **Table 2:** Acceptable Air Concentrations.

### Real-Time Monitoring Summary

Real-time continuous TVOC and PM<sub>10</sub> monitoring was conducted at each of the five (5) AMS. In addition, hand-held monitoring for TVOCs, PM<sub>10</sub>, and mercury vapor was conducted, as well as observational odor and visible dust assessments.

During the report period, the TVOC, PM<sub>10</sub>, and mercury vapor concentrations remained less than the Action Levels, there were no off-Site odor complaints, and no observations of visible dust moving off-Site. The results of the real-time air monitoring are presented in the following tables:

- **Table 3:** Real-Time TVOC and PM<sub>10</sub> Concentrations Summary;
- **Table 4:** Project-to-Date TVOC and PM<sub>10</sub> Average Concentrations Summary;
- **Table 5:** Daily Maximum Hand-held Concentrations Summary; and
- **Table 6:** Weekly Alert and Action Level Event Summary.

### Naphthalene Sampling Summary

Chemical-specific sampling for naphthalene is conducted at each of the five (5) AMS for 24-hour periods once per week during sediment removal activities in the northern portion of the work zone. Samples are shipped to the analytical laboratory for USEPA TO-15 analysis. The results of sampling are provided following receipt from the analytical laboratory and are included in the following table:

- **Table 7:** Naphthalene Sampling Results Summary.

### Meteorological Conditions and Site Map

Meteorological monitoring summaries and a Site map for the report period are included in the following figures:

- **Figure 1:** Meteorological Summaries; and
- **Figure 2:** Site Map(s).

**Table 1: Site-Specific Alert and Action Levels**

Target Constituent	Alert Level	Action Level
<b>TVOC</b> (15-minute average or instantaneous concentration)	One (1) concentration > 1.0 ppm	Two (2) concentrations > 1.0 ppm
<b>PM<sub>10</sub></b> (15-minute average or instantaneous concentration)	One (1) concentration > 150 µg/m <sup>3</sup>	Two (2) concentrations > 150 µg/m <sup>3</sup>
<b>Mercury Vapor</b> (Instantaneous concentration)	Not Applicable	One (1) concentration > 0.05 µg/m <sup>3</sup>
<b>Odor</b> (Instantaneous observation related to Site activities)	Not Applicable	On-Site odor > 3 or public complaints that are verified to be related to construction
<b>Visible Dust</b> (Instantaneous observation related to Site activities)	Not Applicable	Observation of visible dust moving off-Site

**Definitions:**

TVOC – Total volatile organic compounds

ppm – Parts per million

PM<sub>10</sub> – Respirable particulate matter

µg/m<sup>3</sup> – Micrograms per cubic meter

**Table 2: Acceptable Air Concentrations**

COC	AAC µg/m <sup>3</sup>	Project Goal µg/m <sup>3</sup>
PM <sub>10</sub>	150	120
Mercury Vapor	0.05	--
Naphthalene	1.43	1.14

**Definitions:**

AAC – Acceptable Air Concentration

COC – Chemical of concern

PM<sub>10</sub> – Particulate matter with a diameter of 10 micrometers or less in diameter.

µg/m<sup>3</sup> – Micrograms per cubic meter

**Notes:**

- Project Goal is defined as an internal project goal equal to 80% of the AAC.

**Table 3: Real-Time TVOC and PM<sub>10</sub> Concentrations Summary**

Date	AMS-1		AMS-A		AMS-B		AMS-C		AMS-D	
	TVOC (ppm)	PM <sub>10</sub> (µg/m <sup>3</sup> )	TVOC (ppm)	PM <sub>10</sub> (µg/m <sup>3</sup> )	TVOC (ppm)	PM <sub>10</sub> (µg/m <sup>3</sup> )	TVOC (ppm)	PM <sub>10</sub> (µg/m <sup>3</sup> )	TVOC (ppm)	PM <sub>10</sub> (µg/m <sup>3</sup> )
Mon 12/8/25	0.0	6.1	0.0	16.8	0.0	ND <sup>1</sup>	0.0	11.2	0.0	16.1
Tue 12/9/25	0.0	30.4	0.0	33.2	0.0	10.2	0.0	31.5	0.0	30.1
Wed 12/10/25	0.0	28.8	0.0	41.6	0.0	32.4	0.0	26.0	0.0	28.6
Thu 12/11/25	0.0	3.1	0.0	13.1	0.0	2.2	0.0	9.4	0.0	18.0
Fri 12/12/25	0.0	6.7	0.0	15.5	0.0	4.7	0.0	11.8	0.0	7.2
<b>Weekly Summary</b>										
<b>Weekly Maximum</b>	0.0	30.4	0.0	41.6	0.0	32.4	0.0	31.5	0.0	30.1
<b>Weekly Average</b>	0.0	8.7	0.0	14.6	0.0	8.4	0.0	8.6	0.0	8.7
<b>Definitions:</b> AMS – Air Monitoring Station TVOC – Total Volatile Organic Compounds ppm – Parts per million PM <sub>10</sub> – Particulate Matter 10 micrometers or less µg/m <sup>3</sup> – Micrograms per cubic meter PTD – Project-to-date ND – No Data NA – Not Applicable										
<b>Notes:</b> - Highlighted concentrations (if any) require further analysis (see <b>Table 5</b> ). - AMS reported TVOC and PM <sub>10</sub> data represent 15-minute average concentrations. - Project-to-date average PM <sub>10</sub> concentrations are compared to the PM <sub>10</sub> AAC to evaluate the effectiveness of the perimeter air monitoring program with relation to particulates. Compliance will be determined at the end of the project. - Project-to-date average TVOC and PM <sub>10</sub> concentrations are calculated from 6/23/25 through the end of the reporting period. - Baseline results are not included in project-to-date averages. <sup>1</sup> Data missing due to an instrument malfunction.										

**Table 4: Project-to-Date TVOC and PM<sub>10</sub> Average Concentrations Summary**

	AMS-1		AMS-2		AMS-3		AMS-4		AMS-A		AMS-B		AMS-C		AMS-D	
	TVOC (ppm)	PM <sub>10</sub> (µg/m <sup>3</sup> )	TVOC (ppm)	PM <sub>10</sub> (µg/m <sup>3</sup> )	TVOC (ppm)	PM <sub>10</sub> (µg/m <sup>3</sup> )	TVOC (ppm)	PM <sub>10</sub> (µg/m <sup>3</sup> )	TVOC (ppm)	PM <sub>10</sub> (µg/m <sup>3</sup> )	TVOC (ppm)	PM <sub>10</sub> (µg/m <sup>3</sup> )	TVOC (ppm)	PM <sub>10</sub> (µg/m <sup>3</sup> )	TVOC (ppm)	PM <sub>10</sub> (µg/m <sup>3</sup> )
<b>PTD Average</b>	0.0	19.5	0.0	27.5	0.0	19.8	0.0	16.6	0.0	16.0	0.0	13.7	0.0	10.3	0.0	9.2
<b>Definitions:</b> AMS – Air Monitoring Station TVOC – Total Volatile Organic Compounds ppm – Parts per million PM <sub>10</sub> – Particulate Matter 10 micrometers or less µg/m <sup>3</sup> – Micrograms per cubic meter PTD – Project-to-date																
<b>Notes:</b> - Project-to-date average PM <sub>10</sub> concentrations are compared to the PM <sub>10</sub> AAC to evaluate the effectiveness of the perimeter air monitoring program with relation to particulates. Compliance will be determined at the end of the project. - Project-to-date average TVOC and PM <sub>10</sub> concentrations are calculated from 6/23/25 through the end of the reporting period. - Baseline results are not included in project-to-date averages. - AMS-2, AMS-3, and AMS-4 were removed from service on 11/14/25. - AMS-C and AMS-D were deployed on 11/17/25.																

**Table 5: Daily Maximum Hand-Held Concentrations Summary**

Date	TVOC (ppm)	PM <sub>10</sub> (µg/m <sup>3</sup> )	Mercury Vapor (µg/m <sup>3</sup> )	Odor (0-8)	Visible Dust (Yes/No)
<b>Mon 12/8/25</b>	0.0	13	0	0	No
<b>Tue 12/9/25</b>	0.0	15	0	0	No
<b>Wed 12/10/25</b>	0.0	12	0	0	No
<b>Thu 12/11/25</b>	0.0	8	0	0	No
<b>Fri 12/12/25</b>	0.0	12	0	0	No
<b>Definitions:</b> TVOC – Total Volatile Organic Compounds ppm – Parts per million PM <sub>10</sub> – Particulate Matter 10 micrometers or less µg/m <sup>3</sup> – Micrograms per cubic meter ND – No Data NA – Not Applicable					
<b>Notes:</b> - Highlighted concentrations (if any) require further analysis (see <b>Table 5</b> ). - Hand-held data represents instantaneous concentrations unless stated otherwise.					

**Table 6: Weekly Alert and Action Level Event Summary**

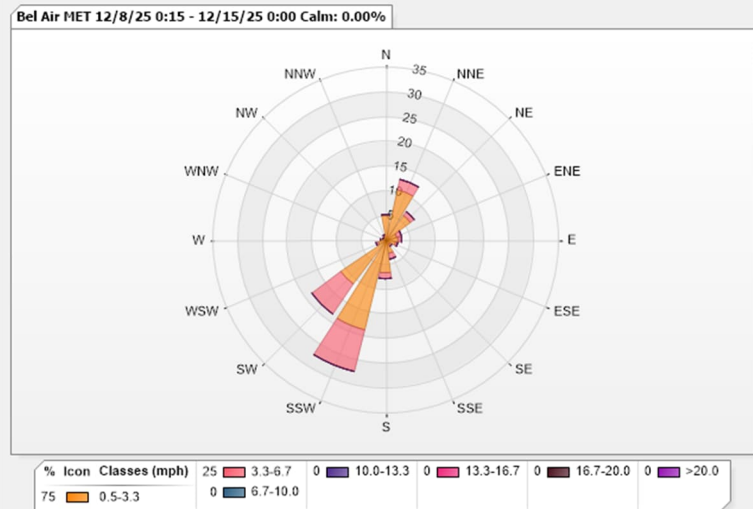
Parameter	Date	Time	Location	Wind Conditions	Elevated Concentration	Comments/Explanation
<b>TVOC (ppm)</b>	NA	NA	NA	NA	NA	TVOC concentrations remained less than the Alert and Action Levels.
<b>PM<sub>10</sub> (µg/m³)</b>	NA	NA	NA	NA	NA	PM <sub>10</sub> concentrations remained less than the Alert and Action Levels.
<b>Mercury Vapor (µg/m³)</b>	NA	NA	NA	NA	NA	Mercury vapor concentrations remained less than the Action Level.
<b>Odor (0-8)</b>	NA	NA	NA	NA	NA	Odor observations remained less than the Action Level.
<b>Visible Dust</b>	NA	NA	NA	NA	NA	There were no observations of visible dust moving offsite.
<div> <div> <b>Definitions:</b>  AMS – Air Monitoring Station  HH – Hand-Held Location  TVOC – Total Volatile Organic Compounds  ppm – Parts per million  PM<sub>10</sub> – Particulate Matter ≤ 10 microns in diameter  µg/m³ – Micrograms per cubic meter  mph – Miles per hour  ND – No Data  NA – Not Applicable </div> <div> <b>Notes:</b>  - AMS-reported data represent 15-minute block average concentrations.  - Observations represent instantaneous conditions unless stated otherwise. </div> </div>						

Table 7: Naphthalene Sampling Results Summary

Date	AAC (µg/m <sup>3</sup> )	Project Goal (µg/m <sup>3</sup> )	AMS-1 (µg/m <sup>3</sup> )	AMS-2 (µg/m <sup>3</sup> )	AMS-3 (µg/m <sup>3</sup> )	AMS-4 (µg/m <sup>3</sup> )	AMS-A (µg/m <sup>3</sup> )	AMS-B (µg/m <sup>3</sup> )	AMS-C (µg/m <sup>3</sup> )	AMS-D (µg/m <sup>3</sup> )	Dup (µg/m <sup>3</sup> )
Wed 5/21/25	--	--	0.205	0.205	0.205	0.205	0.205	0.205	--	--	0.205
Tue 7/22/25	--	--	0.205	0.205	0.205	0.098	0.205	0.205	--	--	--
Wed 7/30/25	--	--	0.205	0.205	0.205	0.205	0.205	0.205	--	--	--
Tue 8/5/25	--	--	0.205	0.205	0.205	0.205	0.205	0.205	--	--	0.205
Wed 8/13/25	--	--	0.205	0.205	0.205	0.205	0.205	0.205	--	--	--
Tue 8/19/25	--	--	0.205	0.205	0.205	0.205	0.205	0.205	--	--	--
Wed 8/27/25	--	--	0.205	0.205	0.205	0.205	0.205	0.205	--	--	--
Thu 9/4/25	--	--	0.205	0.205	0.205	0.205	0.205	0.205	--	--	0.205
Mon 9/8/25	--	--	0.205	0.205	0.205	0.205	0.205	0.205	--	--	--
Tue 9/16/25	--	--	0.205	0.205	0.205	0.205	0.205	0.205	--	--	--
Wed 9/24/25	--	--	<b>1.400</b>	0.205	0.205	0.205	0.205	0.205	--	--	--
Thu 10/2/25	--	--	0.205	0.205	0.205	0.205	0.205	0.205	--	--	--
Mon 10/6/25	--	--	0.205	0.205	0.205	0.205	0.205	0.205	--	--	0.438
Wed 10/15/25	--	--	0.205	0.205	0.205	0.205	0.205	0.205	--	--	--
Thu 10/23/25	--	--	0.205	0.205	0.205	0.205	0.205	0.205	--	--	--
Tue 10/28/25	--	--	0.205	0.205	0.205	0.205	0.205	0.205	--	--	--
Wed 11/5/25	--	--	0.205	0.205	0.205	0.205	0.205	0.205	--	--	--
Thu 11/13/25	--	--	0.205	0.205	0.205	0.205	0.205	0.205	--	--	--
Mon 11/17/25	--	--	0.205	--	--	--	0.205	0.205	0.205	0.205	0.205
Wed 12/3/25	--	--	TBD <sup>1</sup>	--	--	--	TBD <sup>1</sup>	TBD <sup>1</sup>	TBD <sup>1</sup>	TBD <sup>1</sup>	TBD <sup>1</sup>
Thu 12/11/25	--	--	TBD <sup>1</sup>	--	--	--	TBD <sup>1</sup>	TBD <sup>1</sup>	TBD <sup>1</sup>	TBD <sup>1</sup>	TBD <sup>1</sup>
<b>Project Summary</b>											
<b>PTD Average</b>	1.43	1.14	0.271	0.221	0.205	0.199	0.205	0.205	0.205	0.205	--
<div> <div> <b>Definitions:</b>  AMS – Air Monitoring Station  AAC – Acceptable Air Concentration  PEL – Permissible Exposure Limit  MDL – Method Detection Limit  TBD – To Be Determined  PTD – Project-To-Date  µg/m<sup>3</sup> – Micrograms per cubic meter  <b>Bold</b> – Results reported above the MDL  <i>Italics</i> – Compound was analyzed for, but not detected above the MDL (estimated as ½ the MDL)  NA – Not Applicable  ND – No Data </div> <div> <b>Notes:</b>  - Samples are placed in the field at the start of the work activities and collected prior to the start of the following day, unless otherwise stated. The sample date listed represents the day the sample was started.  - Baseline results are not included in project-to-date averages.  - Duplicate samples are collected once per month at AMS-1.  - On Friday, 11/14/25, AMS-2, AMS-3, and AMS-4 were removed from service and AMS-C and AMS-D were placed in new locations on-Site.  - Sampling was concluded on Friday, 12/12/25.  <sup>1</sup> Samples are pending analysis and results will be reported once available from the laboratory. </div> </div>											

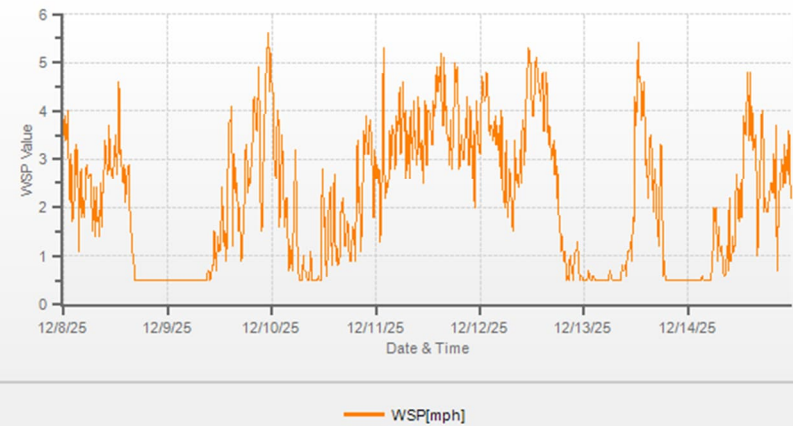
Figure 1: Meteorological Summaries

## Wind Rose:



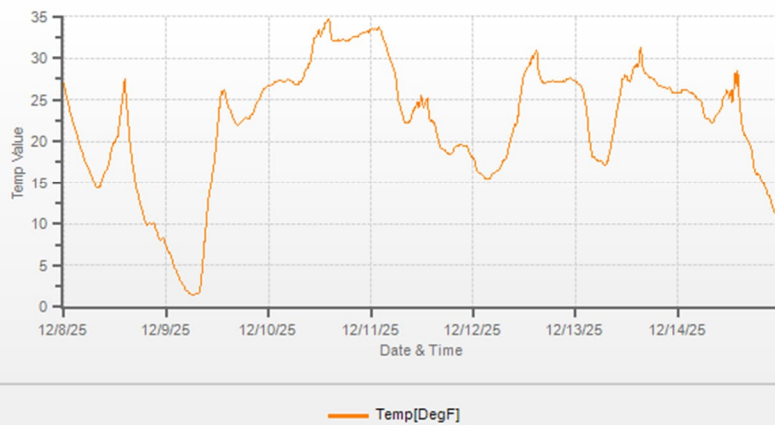
## Wind Speed:

WSP[mph] Station: Bel Air MET Weekly: 12/8/25-12/15/25 Type: AVG 15 Mins. [15 Mins.]



## Temperature:

Temp[DegF] Station: Bel Air MET Weekly: 12/8/25-12/15/25 Type: AVG 15 Mins. [15 Mins.]



## Relative Humidity:

RH[%] Station: Bel Air MET Weekly: 12/8/25-12/15/25 Type: AVG 15 Mins. [15 Mins.]





Figure 2: Site Map (12/8/25 – 12/12/25)

